

# JACKIE'S Forum

## Data Movement Tips: iSeries Navigator

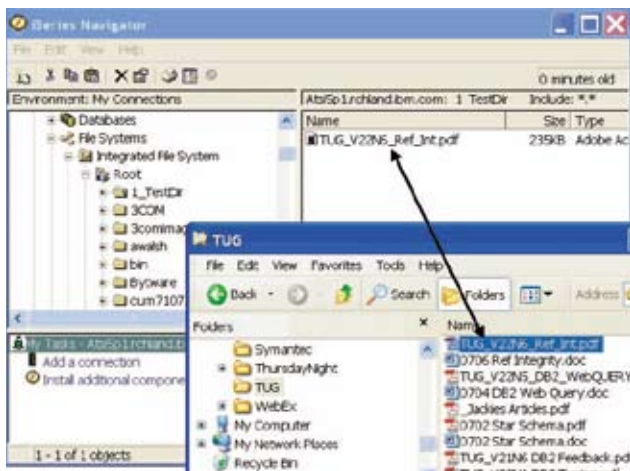


Jackie Jansen

I learned something new this week. I thought it was so interesting that I would pass it on to you and use it as the basis of this month's column.

First off, I have to admit that the something "new" I learned isn't exactly new. I just found out that I can easily copy data between PC directories and the System i using iSeries Navigator. You can simply drag and drop files between Windows Explorer and the Integrated File System (IFS). Cool.

While testing this functionality I thought that I would highlight a few other ways of moving files and tables between different systems. This could be multiple System i's or System i's and PCs.



If you want to get printer output from the System i to your PC you simply open up the Printer output folder under Basic Operations, find your spool file and drag it to your desktop. Your spool file is now a PC text file that you can do anything you want with it, including importing it into Microsoft Excel.

Cut and paste works to move tables between libraries and between System i's. Under the Database folder navigate to the library and then the table you wish to send. Right click

on the table, select copy and then navigate to the library where you want to paste the table. This could be under the database folder on a second System i.

You cannot move libraries using this technique. To move libraries (or any other object for that matter) you need to define a central system and start Management Central. You then define what is known as an endpoint system. This is the system that you wish to move your library to. From there you have two options. If you want to instantly send an object or a directory to another system you would simply navigate to that object via the IFS structure. To find a library in the IFS you need to look underneath the QSYS.LIB directory. Right click on any item or level in the IFS and one of the options will be Send. This allows you to send to any system that you have defined to Management Central as endpoint systems.

If you know that you are going to often need to send the same library or file to other systems you can go into Management Central and create a "package definition". This can be as simple as pointers to


one or many items on your system. When this "package" of items needs distributing you simply right click on the definition and say Send.

The most common way of sharing files between the PC and the System i is using iSeries Netserver. This is the server function that allows you to partake in Window's Network Neighborhood and map network drives. In iSeries Navigator locate the directory in the IFS that you want to share. Right click on it, select Sharing and

New Share. You can then view the File Shares in the IFS and map a PC drive from there. Alternatively you can use Windows Explorer, select Tools, and then map your network drive to a System i file share.

Sometimes when you look at the data in a file in the IFS you see gobbledygoop (my technical term). This is because of the age old issue of ASCII and EBCDIC. If you are moving files back and forth between the IFS and the PC, or simply using the System i as a shared network drive you can tell the system which files are basically text files that you want to be able to view or edit. To do this, right click on the Integrated File System folder and display the properties. In the properties display you can add multiple file types for your text files. For example you might add "CFG". Now you will be able to view and edit any CFG file stored in the IFS directly from iSeries Navigator.

We haven't forgotten UNIX or LINUX either. If you want to mount an iSeries directory or folder as a local NFS drive simply click on the directory in the IFS and select NFS exports and then Properties.

This column wasn't meant to be an in-depth analysis of data movement tools. It was written hoping that you might be able to pick up a few hints and tips to make life easier in this world of multiple, and often heterogeneous, systems. 

**Jackie Jansen** is a Senior Consulting IT Specialist. She currently works in the IBM Americas Advanced Technical Support Solutions Centre. Jackie is a frequent speaker at iSeries Technical Conferences and User Group meetings. Contact her at [jjansen@ca.ibm.com](mailto:jjansen@ca.ibm.com).