

BUSINESS INTELLIGENCE

with Jackie

DB2 OLAP Try and Buy

IBM's DB2 OLAP Server is an excellent multi-dimensional or Online Analytical Processing solution that delivers "speed of thought analysis" to your end users. It allows you to build sophisticated decision support, planning, and analysis applications for your company.



IBM and ShowCase have teamed up to offer you a FREE Trial CD containing IBM DB2 OLAP Server for iSeries and ShowCase BI software solutions. We've included DB2 OLAP Server, data warehousing extract and load software and query and reporting solutions. The trial version is fully functional and can be used for 180 days. It is intended for demonstration and evaluation purposes only and is not intended for production use. This program will run until the end of this year. All new iSeries servers are currently shipping with this CD. This CD can also be requested via IBM's web site dedicated to this Trial Program. <http://www.ibm.com/software/data/db2/tryolap.html>.

IBM has nicely put DB2 OLAP demos on our web site. The only problem is that we have hidden the demos on you. This is where I can help. Go to the web site listed above and choose the link under the "Extra Bonus" section for a free trial of Analyzer. Follow the link for

"some live OLAP sample applications". Lastly follow the "Launch Me" link under the "DB2 Analyzer Web Client (Java)" picture. This takes you to 5 different demonstrations of solutions implemented with DB2 OLAP Server and Analyzer. Analyzer is a graphical front end for DB2 OLAP Server. It delivers an intuitive, easy-to-use Web-based or Windows interface to all your end users. The first demonstration, entitled Samples, is included with Analyzer. This shows you basic queries into a sales multidimensional database. The other 4 demonstrations include retail, banking, B2B analysis and, of course, your golf score analysis.

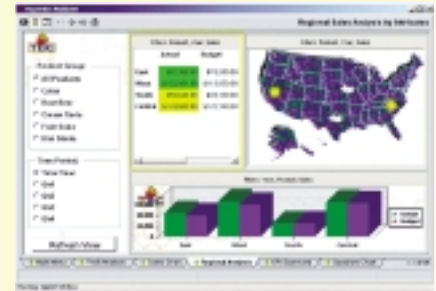
Analyzer comes in two almost identical flavours. IBM's DB2 OLAP Analyzer and ShowCase's Analyzer. The main difference between these two products is the integration with your iSeries or AS/400. ShowCase's Analyzer utilizes your iSeries / AS/400 web server while the IBM Analyzer product requires an NT web server. Both products can be acquired through IBM. The NT web server version is available through the links documented above that point you to the bonus trial offer. If you wish to use your iSeries or AS/400 as the web server contact one of the names listed below.

Separate from the graphical Analyzer interface DB2 OLAP Server comes with add-ins for Lotus 123 and Microsoft Excel. This allows your spreadsheet users very easy access to their data. Users can be looking at a spreadsheet showing their sales by product across Canada. With a simple double click on Canada they will be looking, almost instantaneously, at their sales by product across each region in Canada. Users simply double click on an entry to drill down to




Jackie Jansen

the next level of detail. If I were a financial end user and a generation younger I would call the capability to instantly drill down on a profit and loss statement or an income and expense statement "awesome". I think I am running out of room for this column. To summarize, if you didn't receive your free Trial CD go to <http://www.ibm.com/software/data/db2/tryolap.html> and request one. This site also points you to two mandatory documents to help you with installing the product and loading a simple demonstration.



For questions or assistance with this program, including how to view your own production data please contact either myself at jjansen@ca.ibm.com or Brad Beckett at bbeckett@ca.ibm.com.

Oh yes, don't call me in October. I will be celebrating my 25th wedding anniversary on a 3 week vacation touring Japan. I don't plan on thinking about DB2 OLAP at all! 

Jackie Jansen is a Certified Consulting IT Specialist. She currently works in the IBM Americas Business Intelligence Solutions Centre. Jackie is a frequent speaker at AS/400 Technical Conferences and User Group meetings. Contact her at jjansen@ca.ibm.com.