

i TECH TIPS

By Stephen Collins

Why You Should Have a Backdoor into Your System i

Background

I have a customized sign-on screen that allows me to display messages (with colour) and the current date to my users. (Figure 1.) I have “hidden” the menu and library input fields since my software decides this information based on the user’s profile. (Figure 2.)

Situation

All worked perfectly until I migrated my software to a new System i5 Model 515.

Not that there was anything wrong with the new machine—but when you clear your main program library in order to load the latest version (from the current production machine) you get SIGNED OFF and NO ONE can sign on—not even QSECOFR!

Fortunately for me I had decided NOT to use the customized sign-on screen during our system trials so the menu and library names were still on the i5 sign-on screen. A call to **John Still** at Mid-Range cured my panic attack—use QCMD (program) and MAIN (menu) on the sign-on screen and you bypass any custom sign-on program.

Solution

So my advice is this: Create a BACKDOOR profile with QSECOFR security and with QCMD and MAIN as the initial program and menu, so you can always get into your system, regardless of your customized sign-on screen.

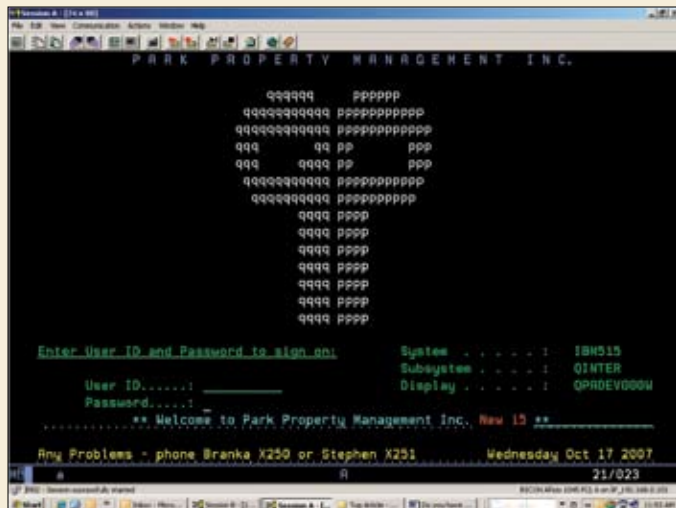


Figure 1. Customized sign-on screen

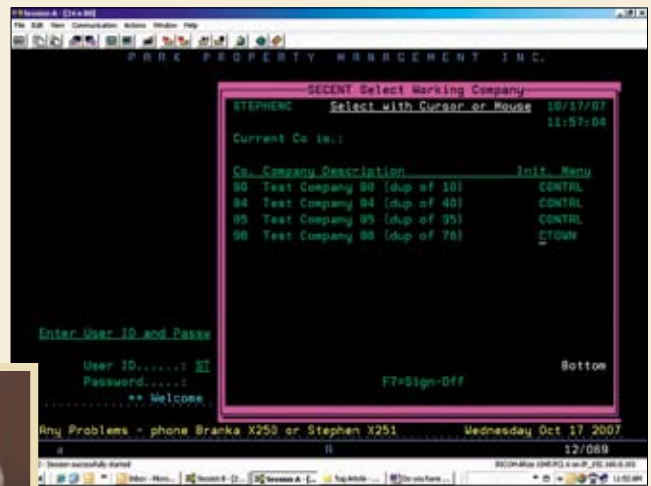


Figure 2. Menu & library dependent on user

Stephen Collins can be reached at Park Property Management (scollins@parkprop.com). He has worked with computers for 41 years using IBM equipment exclusively, and has attended TUG since its earliest days (with Wendy & Penny in the Granada TV Boardroom). Stephen is still writing RPGII & RPG400 code—converting from a System/36 to the latest i5 machine, and is always looking to adopt new and interesting things into the system. He would be happy to learn what tricks you might have up your sleeve. So why not submit YOUR tips to the TUG magazine?

Modern RPG & Cobol Web Applications

IceBreak Application Server for System i

- ✓ Build new Web applications and convert existing green-screen applications
- ✓ Does not require any additional hardware or software including CGI, Java, Apache, WebSphere, WebFacing
- ✓ Supports XML, Web Services, SOA, AJAX, SQL
- ✓ Deliver Web applications that your users and customers will say “Cool” & “Wow”
- ✓ Very EASY learning curve
- ✓ RPG business logic is developed and maintained separate from the XHTML user interface

User Group Members

- ✓ Try IceBreak completely FREE for 30 days
- ✓ No Gain — No Pain. Let us develop a Web application for you and you pay only if you purchase IceBreak.
- ✓ Receive a 30% User Group discount off the IceBreak Enterprise Edition (Limited time User Group offer)

For additional information or online demo, contact

www.IceBreak4RPG.com

System & Method International

info@IceBreak4RPG.com • 1-888-290-3256

www.IceBreak4RPG.com • www.system-method.com